

Hurricane Milton

Damage Assessment

Chris Oswalt UF/IFAS Polk & Hillsborough Counties

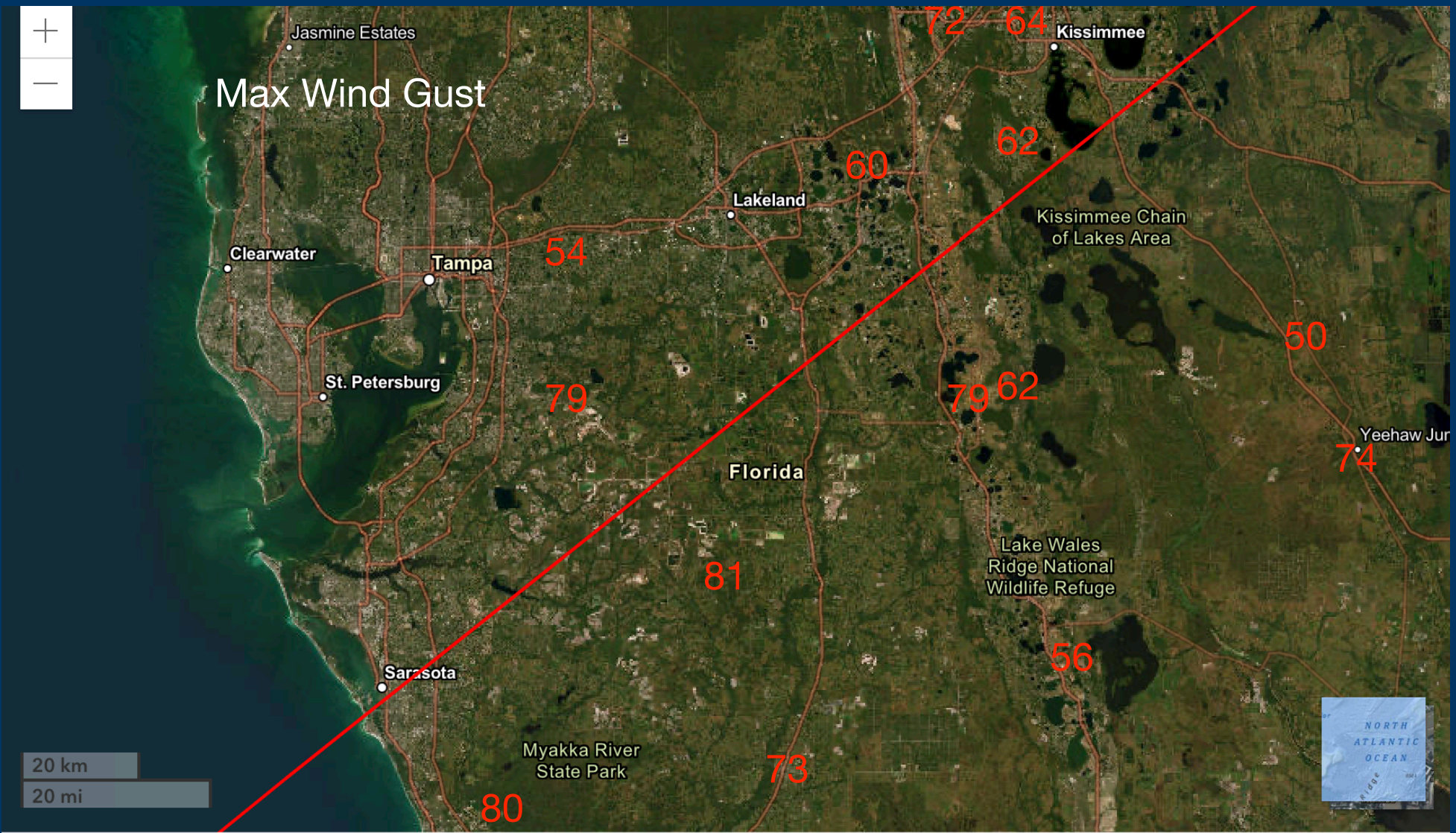
Post Storm Priorities

- Multiple locations
 - Storm track
 - Varietal differences
 - Work from track out
 - Damage increases with time away from track
- Identify and flag specific trees for followup observations
 - Damage will likely continue to progress
- Identify potential food safety issues



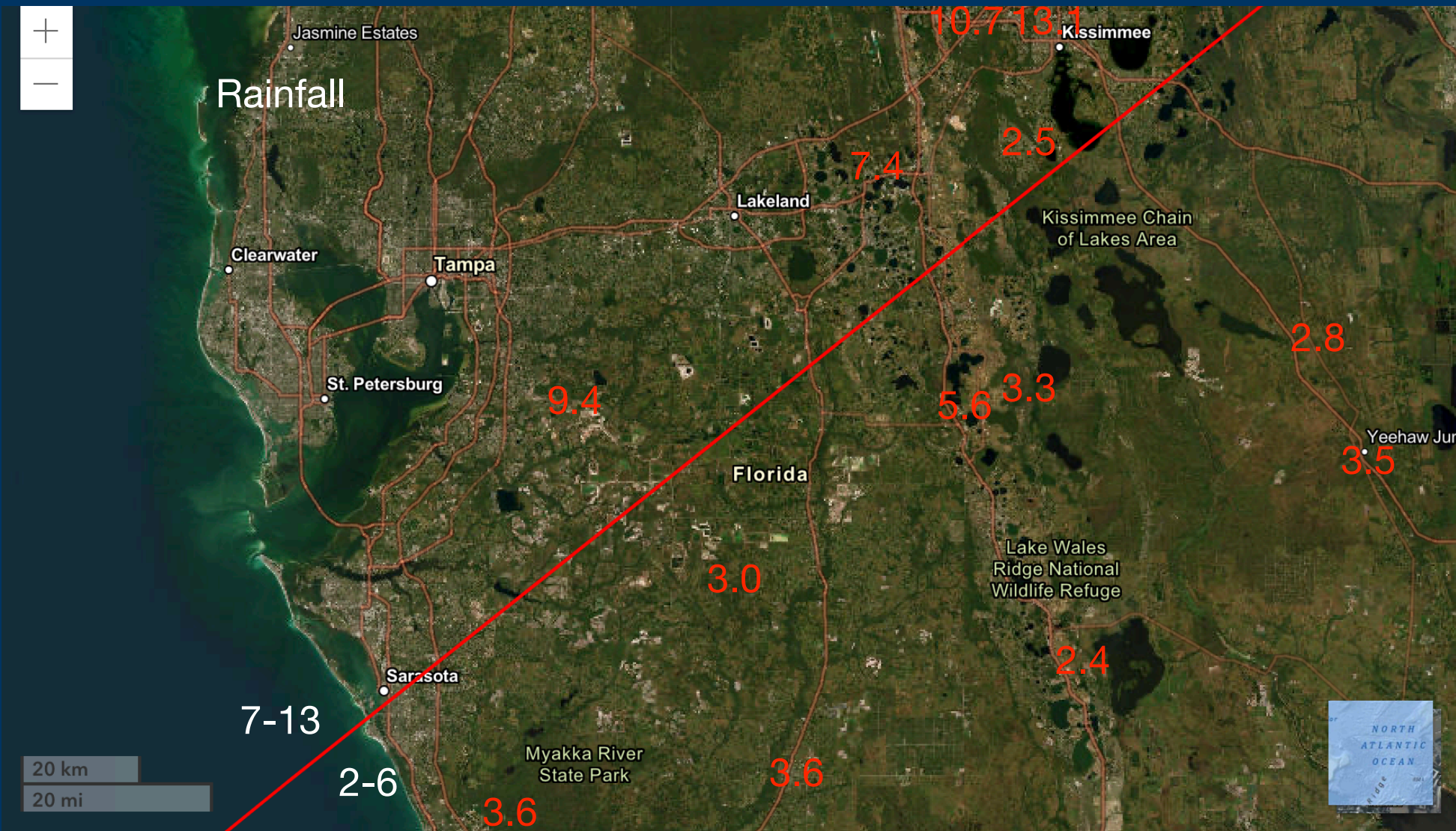


Max Wind Gust





Rainfall



20 km
20 mi



Post Storm

Documentation

- If it isn't documented?
 - It didn't happen
- Contact insurance provider (RMA)
- Contact Farm Service Agency
- Other assistance programs (low or no interest loans for various terms) USDA-NRCS
- Participate in post damage assessment surveys (UF & Mutual)



Marcinda Kester
County Executive Director
USDA - FSA
Polk, Hillsborough & Pinellas Counties

(863) 533-2051 ext 2 (Polk)
(813) 752-1474 ext 2 (Hillsborough)
marcinda.Kester@usda.gov