

CITRUS PEST SPOTLIGHT



Figure 1. Adult *Diaprepes* root weevil and leaf notching caused by adult feeding damage

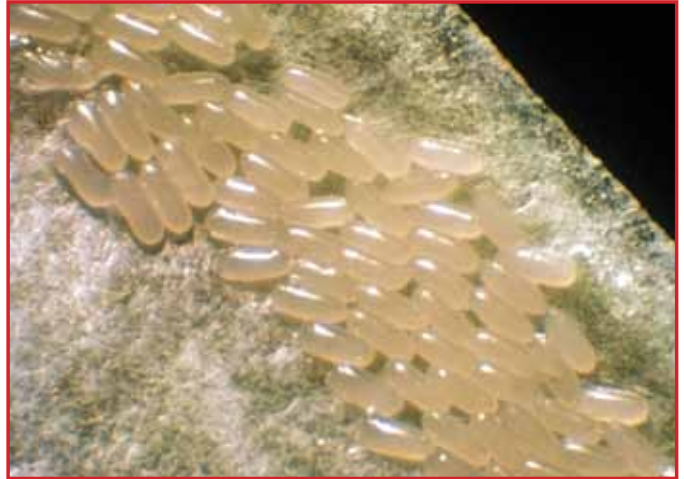


Figure 2. *Diaprepes* egg mass laid on the underside of a leaf

Diaprepes root weevil

By Michael E. Rogers

SCIENTIFIC NAME:

Diaprepes abbreviatus (L.)
(Coleoptera: Curculionidae)

IDENTIFICATION:

Adults (Figure 1) are 1-2 cm in length and are easily recognizable by the bright orange/yellow color patterns on the elytra (wing covers). Eggs (Figure 2) are 1.2 mm long by 0.4 mm wide, yellow/white in color and are laid in masses on the underside of a mature leaf, which is usually glued to the top side of an adjacent leaf to provide protection for the eggs. *Diaprepes*



Figure 3 (above). *Diaprepes* root weevil larvae



Figure 4 (right). Feeding damage to a structural tree root caused by *Diaprepes* larvae

larvae (Figure 3) are white in color, lack legs, and are not readily observed since they are found in the soil feeding on the root system of the tree.

DAMAGE:

Feeding by the adult weevils, observed as leaf notching (Figure 1), is the most easily recognizable damage caused by *Diaprepes*. However, this leaf damage has no effect on overall tree health and fruit yield. Damage which can result in economic loss is caused by the larval stages of *Diaprepes* which feed on the root system of the tree (Figure 4). Girdling of the roots can cause root dieback; girdling of the crown can lead to tree death. This direct feeding damage to the roots also increases the likelihood of *Phytophthora* infection, which may result in rapid tree decline.

Keep your investments growing with

SPROUT GUARDS

Sprout Guards may also be custom ordered to any size needed, regarding mechanical harvesting.

★ 30 YEARS EXPERIENCE ★



Black Sprout Guards, 8" x 20"



Green Sprout Guards, 8" x 14" standard size tree

★ BEST WRAP, BEST PRICE ★
AND BEST SERVICE

Mike Hurst Citrus Services, Inc.

(863) 452-6469 • Cell (863) 443-0531; Nextel 161★20414★1

MANAGEMENT:

In groves with a history of significant *Diaprepes* damage, pesticide applications to reduce weevil populations may be justified. Two foliar sprays (spaced four weeks apart), targeting adult weevils after emergence begins, have been shown to reduce weevil populations and the associated root damage. Many of the foliar insecticides recommended for controlling adult *Diaprepes* will also provide control of the Asian citrus psyllid. Soil barrier sprays, applied shortly after peak adult emergence, may be used to control larvae as they emerge from egg masses in the canopy and fall to the soil. Previously, parasitic nematodes were also commercially available that could be used to target *Diaprepes* larvae in the soil. Currently, recommended nematode products for *Diaprepes* are commercially unavailable.

For more detailed information on control of *Diaprepes* root weevil, please refer to the 2012 Florida Citrus Pest Management Guide.

Michael E. Rogers is an associate professor of entomology at the University of Florida-IFAS' Citrus Research and Education Center in Lake Alfred. 🍊

CITRUS WEED SPOTLIGHT

Goatweed (*Scoparia dulcis*)

By Stephen H. Futch

LEAVES: opposite, blades narrow, toothed, 1/3 to 1 1/2 inches long; dots on both sides

STEM: multiple, branched, erect,

smooth or with soft, fine hairs; becomes woody rather quick

FLOWERS: small, white, about 1/8 to 3/16 inch long, borne in the leaf axils

SEEDS: yellowish-brown capsules contain numerous, extremely small, brown seeds

LIFE CYCLE: perennial

HEIGHT: 1 to 2.5 feet tall

Stephen H. Futch is a multi-county citrus Extension agent based at the Citrus Research and Education Center in Lake Alfred. 🍊



Index to advertisers

A-DAB, LLC.....	12	Harris Citrus Nursery	37	Pioneer Ag Equipment.....	10
Arcadia Citrus Enterprises.....	11	Haifa Nutritech	9	Plant Food Systems.....	5
Blue Goose Growers	19	Imperial Builders & Supply Inc.....	17	Reed Bros. Citrus.....	36
Blue Heron Citrus Nursery	18	Johnson Harvesting.....	37	Robinson Citrus Tree Planting.....	36
Carden & Associates, Inc.	8	K & C Farmer Citrus Nursery	37	Saunders Real Estate.....	36
Carter Grove Care.....	12	Kahn Citrus Management, LLC	4	Simmons Citrus Nursery	37
Chemical Dynamics.....	40	Kelly Tractor	4	Southeast AgNet	38
Citrus Expo	24-29	Krause Grove Service	33	Southern Citrus Nurseries LLC.....	37
Citrus Nursery Management.....	37	Magna-Bon	11	Southridge Citrus Nursery	37
CRDF	23	M & M Citrus Nursery	36	Strathmore Ladder	31
Crosby & Associates	36	Maury L. Carter & Associates.....	36	Sunbelt Research & Develop.	16
Curtec.....	7	Mike Hurst Citrus Services, Inc. ...	34	Tiger Creek Citrus Nursery.....	36
Dorsey Trailer	33	Murphy Citrus Nursery.....	36	Tropicana Products, Inc.	12
Dow AgroSciences.....	20-21	Navum Valley Farm.....	36	Updike Citrus Services	32
Farkas & Fussell Citrus Nursery	37	Nutri-Phite	12, 31	Vigiron	15
Farkas Citrus Nursery	36	Oro-Agri	39	Wells Fargo	2
Florida Department of Citrus.....	13	P & H Solutions, Inc.	36	Willits & Newcomb	37
Frostproof Growers Supply, Inc.	33	Petteway Growers Citrus Nursery..	36	Wright's Citrus Nursery.....	36
Grove For Sale	37	Phillip Rucks Citrus Nursery.....	37		