

Citrus Black Spot

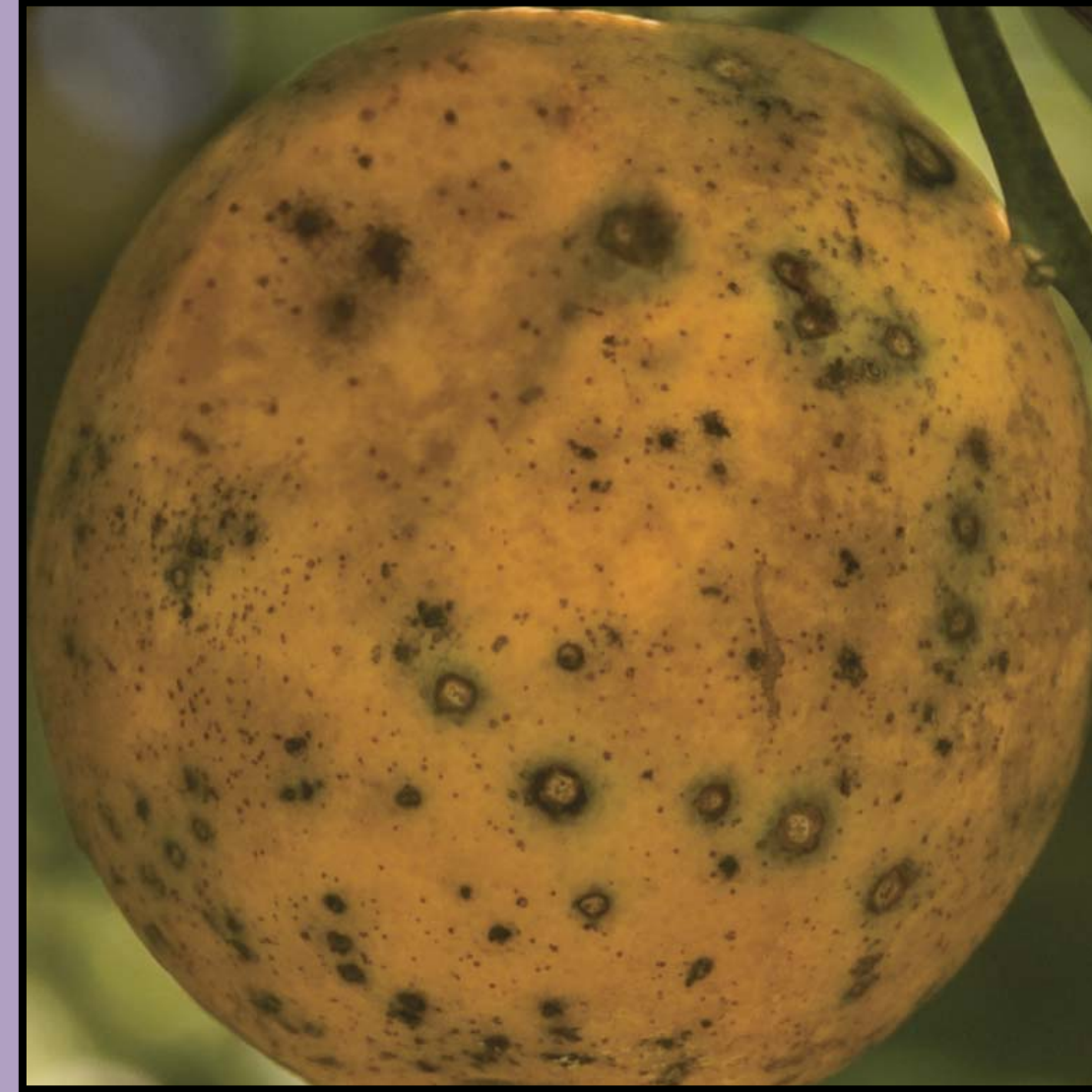
Citrus black spot has many symptom types such as hard spot, cracked spot, false melanose and virulent spot. The most characteristic is hard spot as shown below. They appear as small, round, sunken lesions with gray centers with brick-red to black margins. Green halos are often seen around hard spot lesions. Fungal structures appear as slightly elevated black dots in center of lesions.



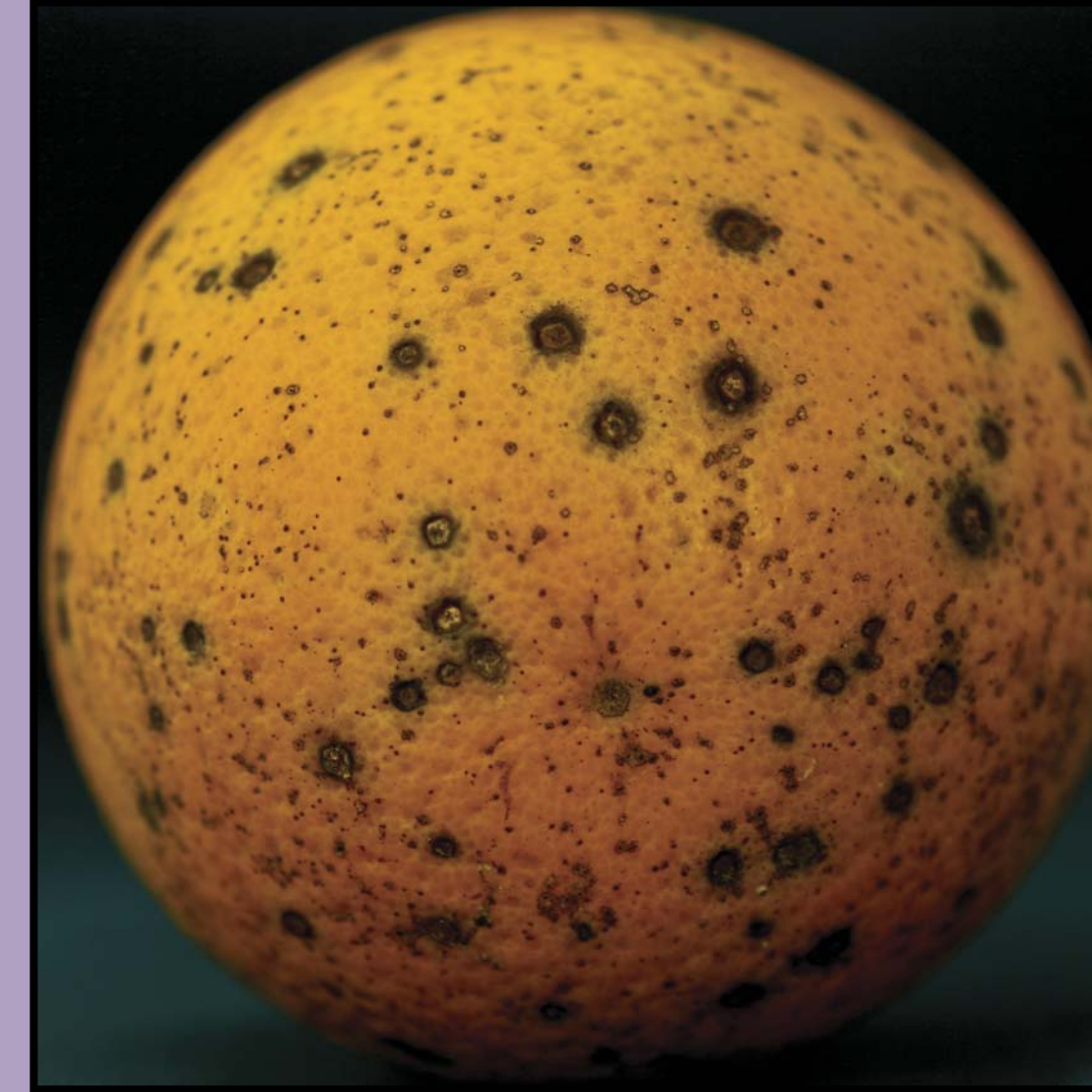
Very low levels of hard spot on Valencia



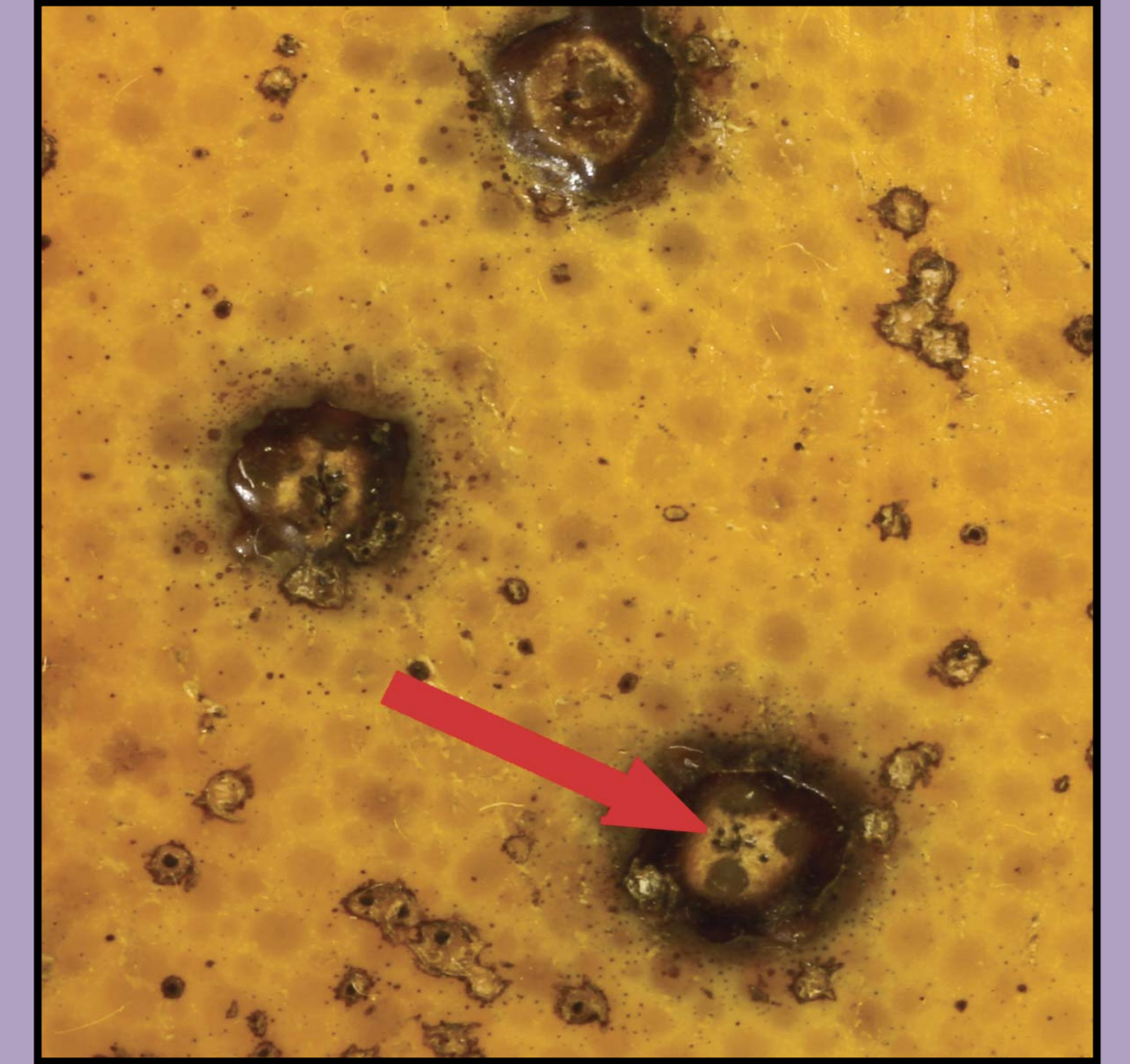
Low levels hard spot on Valencia



Moderate hard spot on Valencia



Moderate hard spot on Valencia



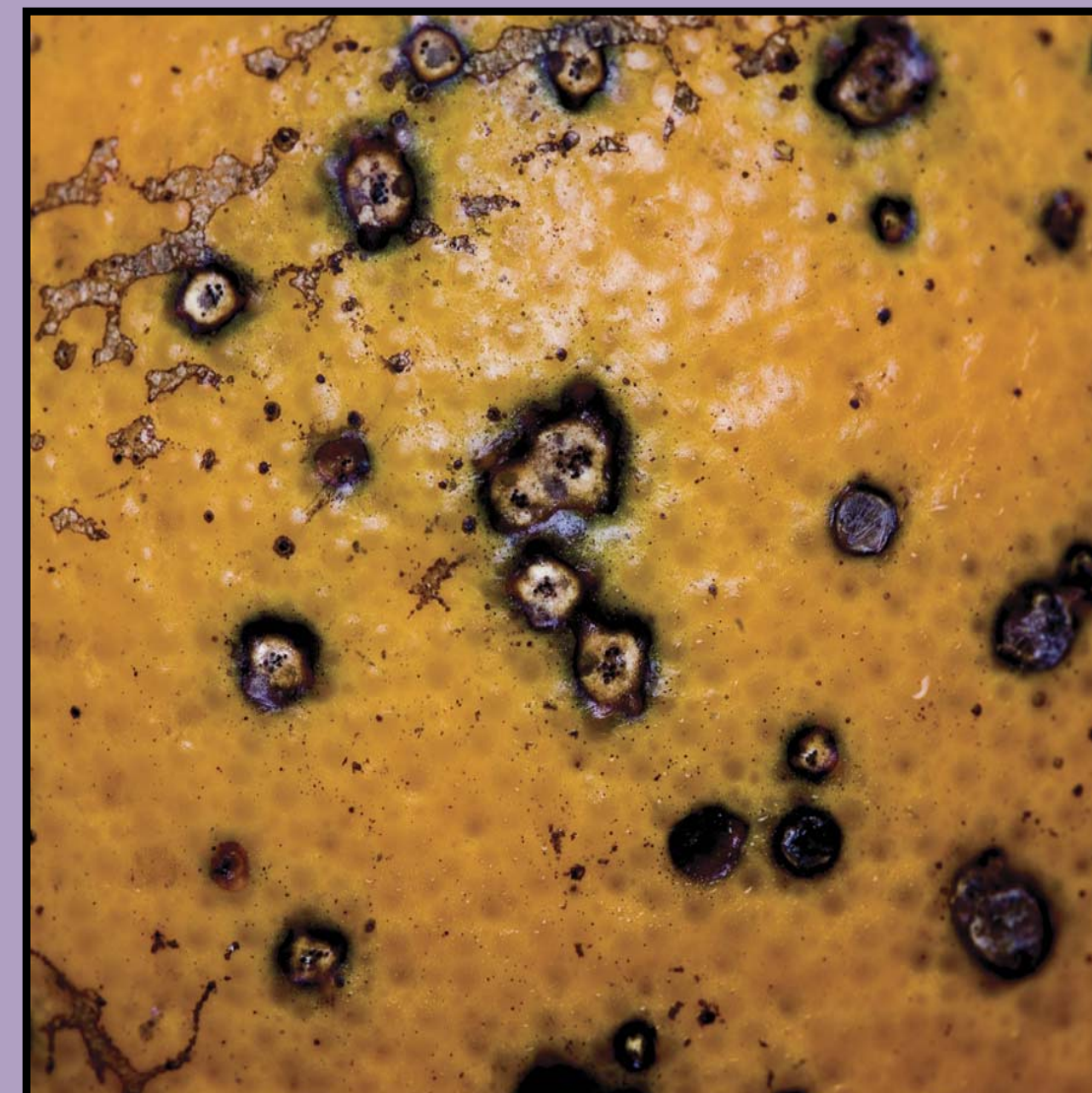
Close up of hard spot lesions; note fungal structures inside lesions



Severe hard spot on Valencia



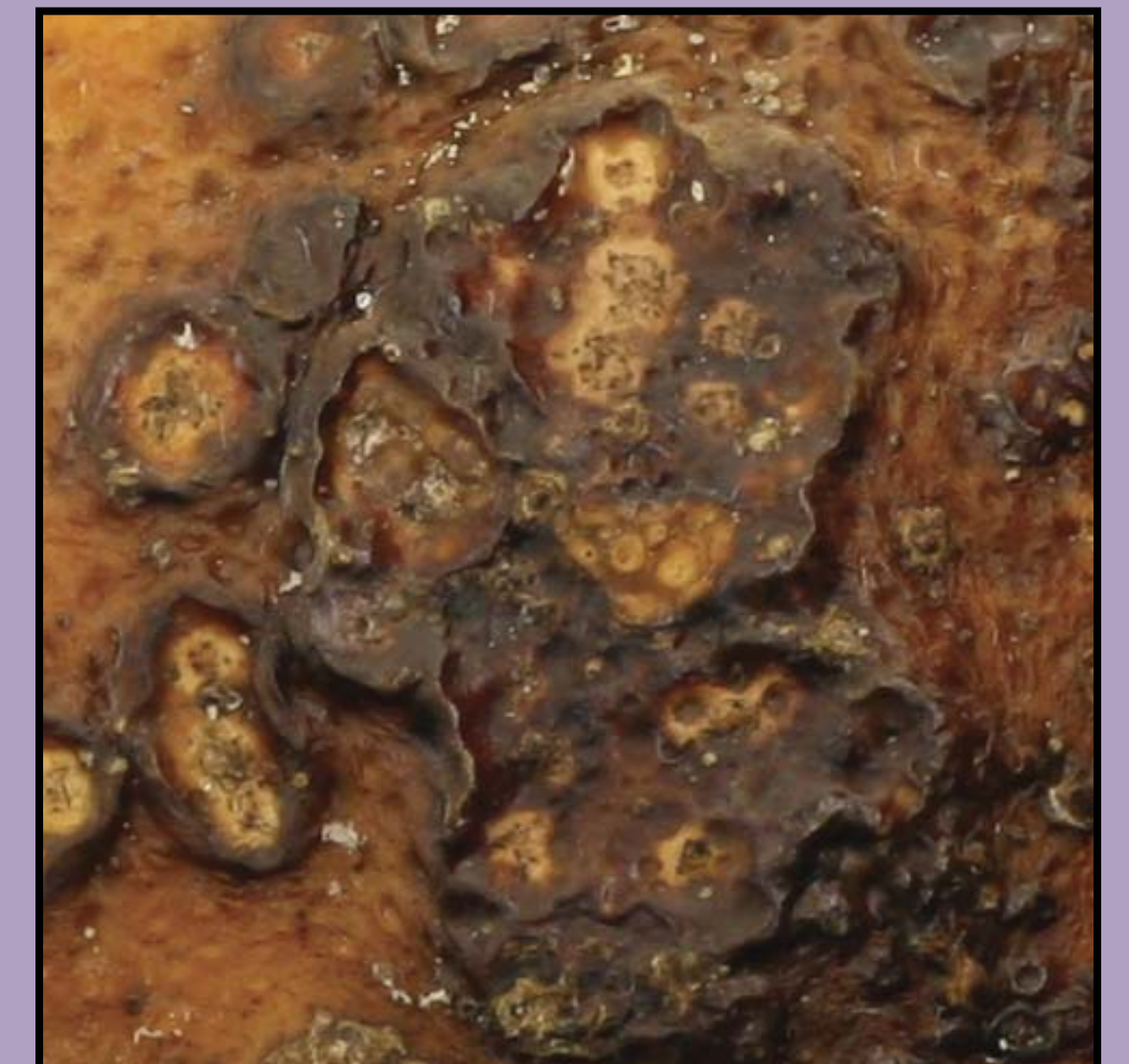
Severe hard spot on lemon



Severe hard spot

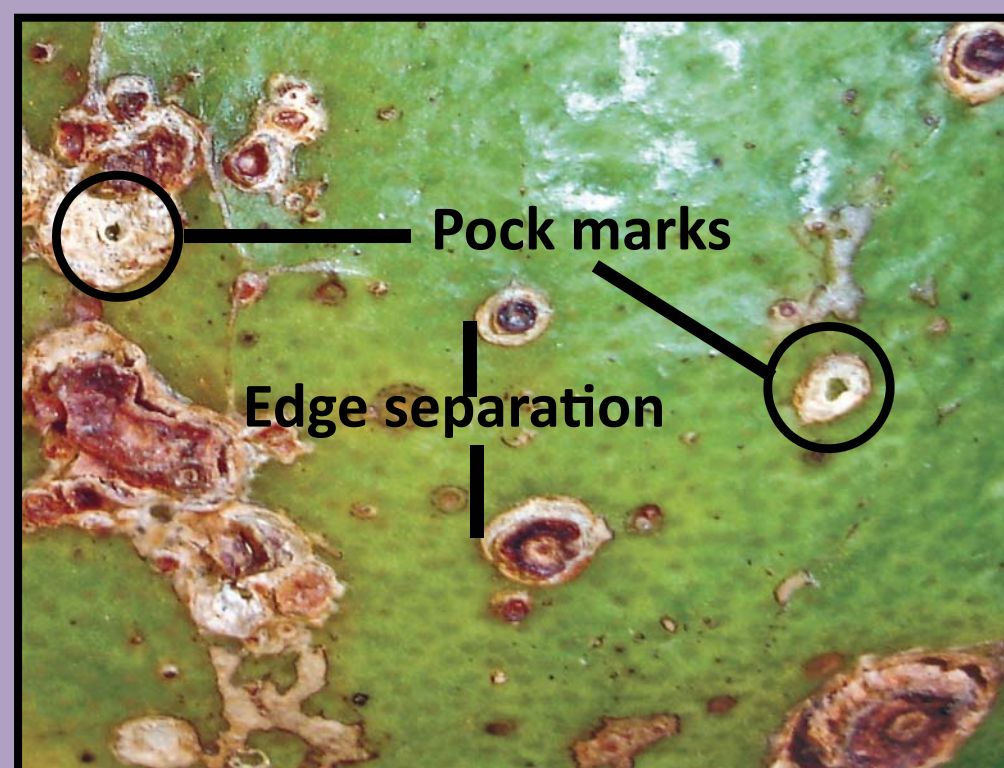


Severe hard spot symptoms on Valencia

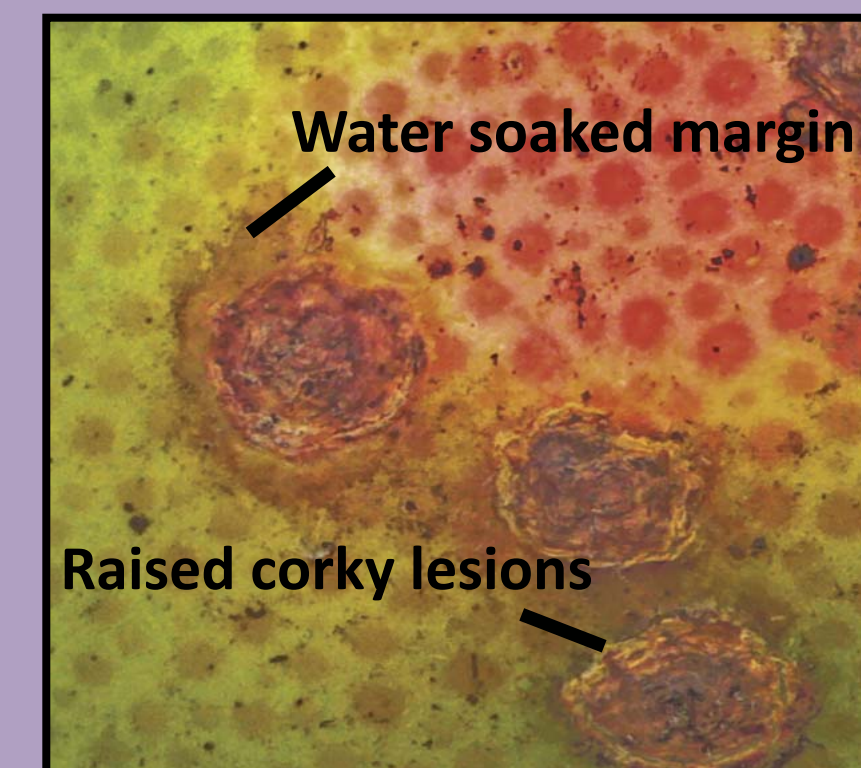


Close up view of severe hard spot symptoms on Valencia

Fruit Blemishes that Might be Confused with Black Spot



Alternaria
Sunken, crater-like lesions



Citrus Canker
Raised, corky lesions with water soaked margin

