

How to turn on Presentation mode

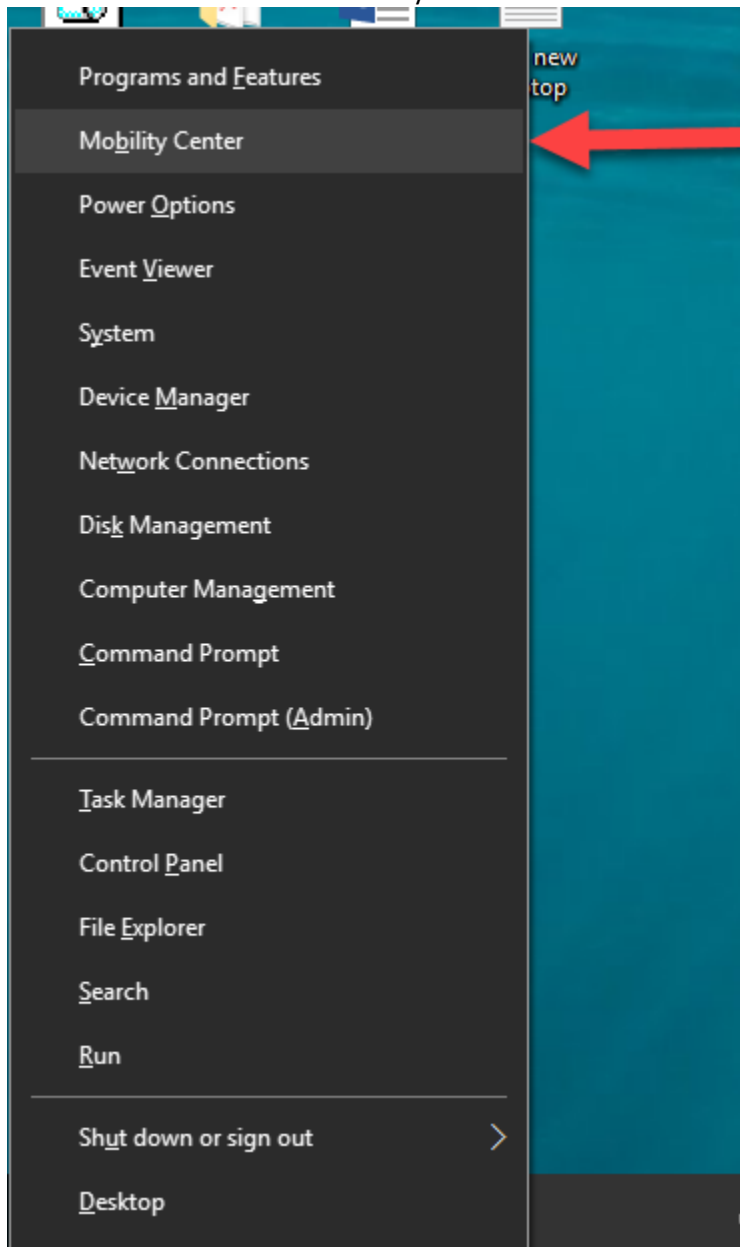
To prevent Windows Updates from restarting during a presentation follow the Steps Below. **(ISD always suggest that you do updates the day before a presentation to avoid issues)**

Step 1.

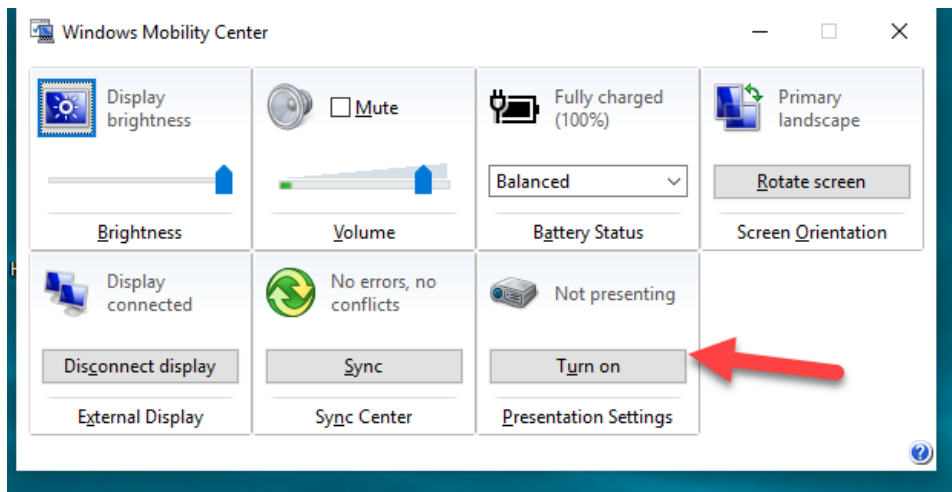
Press Windows logo key +X

Step 2.

Press the letter B to select Mobility Center from the start menu.



Step 3. Once the Windows Mobility Center window comes up press the letter U on your keyboard and it should turn on Presentation mode.



The Presentation Settings Button should now read Turn Off that means presentation mode is on currently.

